

Infinity-Mugen Program List

Exclusive, bespoke travel itineraries designed to encapsulate Japan's infinite possibilities.

Your journey starts here. Take a look at itineraries from the Infinity portfolio.



Regional Revitalization Inbound Association - Project Team

ART EXPERIENCES

1. Tajimi City, Gifu Prefecture

Two-day Mino-yaki Pottery Tour with Apprentice under pottery master Ryotaro Kato During the Azuchi-Momoyama period (1568-1600), pottery was first created in Japan with a unique sense of beauty called Momoyama-tou. Bowls from Momoyama-tou were fired in the Mino region and have enchanted people for many centuries. The Koubei kiln, established in 1804, is a representative kiln in the Mino region that has produced many 'Living National Treasures'.

This is a one-night, two-day program where you will become an apprentice to the 8th generation pottery master of this kiln. The completed bowls will be delivered to your home in a special paulownia box with a certificate of completion signed by pottery master Ryotaro Kato.



2. Uji City, Kyoto Prefecture

Explore the world of Japanese Tea with 16th generation tea master Hosai Matsubayashi.

3. Saga Prefecture

Discover the unique Karatsu-yaki pottery form of 14th generation pottery master Taroemon Nakamura.

4. Bizen City, Okayama Prefecture

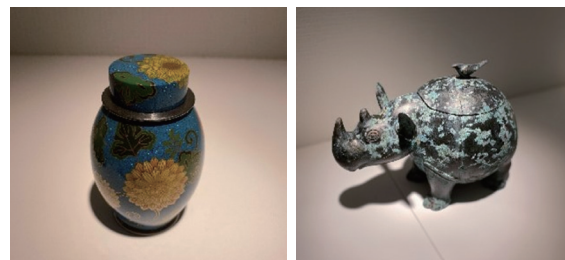
Bizen-yaki pottery has a history of close to 1000 years, first appearing in the 12th century and where the 16th century tea utensils are still highly regarded by tea connoisseurs for their simplicity and elegance.

This experience will open the world of 'Living National Treasure' Jun Isezaki by visiting his studio.

5. Wajima City, Ishikawa Prefecture

Wajima City on the Noto Peninsula are committed to using natural wood and natural lacquer and employ traditional techniques to create unique lacquer art pieces that are unique contemporary pieces never seen before.

Experience this form by visiting the Hikojumaki-e group, a comet of creativity in the lacquer art world, led by the lacquer master, Takashi Wakamiya. Ending by dining at a Michelin one-star French restaurant L'Atelier de Noto.



6. Kyoto City, Kyoto Prefecture Unique Venues and Artists Live Performances

Enjoy a luxurious private dinner concert by top artists such as the renowned Japanese gagaku (Japanese Imperial Court Music and Dance) performer Hideki Togi, and pianist Nobuyuki Tsuji, who became the first Japanese to win the Van Cliburn International Piano Competition at exclusive locations, the Golden Pavilion, Toji Temple, and Kiyomizu Temple.

7. Kyoto City, Kyoto Prefecture Kyoto Creative Unit GO ON

The members of GO ON, formed in 2012, include the long-established Nishijin-ori (Nishijin Weave) store, Hosoo, which has been around since the Genroku period (1688), as well as a bamboo craftsman, Kohchosai Kosuge, a wood craftsman from Nakagawa Wood Craft, a tea container maker from Kaikado, Kinuami-tsuji a gold wire craftsmanship, and an Asahi-yaki tea pottery maker.

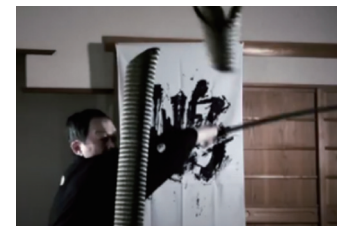


- Nishijin-ori (Nishijin Weave) has a 1200-year history. During the 1000 years that Kyoto was the capital, weaving was ordered by the imperial court, nobility, samurai class, temples and shrines, and wealthy townspeople. At that time, cutting-edge craftsmanship practiced under the protection of those classes.
- In the Nishijin area of Kamigyo-ku, Kyoto Prefecture, within a 7-kilometer radius, there were about 20 craftsmen who handled 20 processes, such as applying gold leaf and cutting, to create Nishijin-ori.
- The 12th generation of Hosoo, Hosoo Masataka, works on a 150cm wide fabric unprecedented in the world of Nishijin-ori, with the original width of Nishijin-ori around 32cm. In 2008, after architect Peter Marino saw Hosoo's obi at the Japan Design Exhibition held at the Decorative Arts Museum in Paris, he requested a custom wallpaper for his store's walls, and since then, Hosoo's textiles have been used for the interiors of luxury brands such as Chanel and Louis Vuitton.

8. Tokyo, Tottori Prefecture, Shimane Prefecture, Kumamoto Prefecture Sword Tour-Experience the captivating world of Japanese swords

The tour begins with a lecture on the history of swords and their world by the owner of the art sword store Ginza Seiko-do (Tokyo) which has been in operation for over 100 years. You will have the opportunity to visit the Tataro Ironworks that produces tamahagane – which is a type of steel made in the Japanese tradition in Oku-Izumo Town, Shimane Prefecture. See a working swordsmith's workshop, and a sword mounter's repairman under master sword maker Koga Hanshi in Kumamoto Prefecture.

Finally witnessing the exciting and ritualistic art form of 'Muso Jikiden Eishin-ryu' the moment of unsheathing the sword that decides victory or defeat by the head of the Ogamiyama Shrine, in Tottori Prefecture.



CULTURAL EXPERIENCES

9. Kyoto City, Kyoto Prefecture Prayer at the Imperial family Sennyu-ji Temple in authentic Japanese clothing

Other programs include special seats for the viewing of Twenty-five Bodhisattva Oneri Memorial Service at Sokusei-in Temple, the Mibu Kyogen Autumn Viewing at Mibu-dera Temple, the Kyokusui-no-en, winding stream party viewing at Kitano Tenmangu Shrine, and the world of Kyoto Goyasan-no-okuribi in Kyoto.



10. Kyoto City, Kyoto Prefecture Literati Tea or Sencha Tea Experience

Sencha-do is one of Japan's tea ceremony cultures. It is said, that there are more schools of sencha-do in Japan than of matcha-do, but surprisingly, it is not well known. From the end of the Edo period, various scholars, artists, and cultural figures gathered at Issa-an and Tsukudai-ya Sencha Tea Room, where they drank sencha while admiring paintings and calligraphy. You will have the opportunity to experience literati tea (sencha) tea ceremony with the best Uji tea.



11. Kyoto City, Kyoto Prefecture Exploring Kyoto's Traditional Confectionery Shops

Taste the sweetness of wagashi (Japanese sweets) with tea at iconic stores in Kyoto.

12. Kyoto City, Kyoto Prefecture Tour of Kyoto with Acclaimed German Garden Designer Dominik Schmitz

Looking at significant architecture in relation to structures and natural spaces in designated areas around Kyoto.

13. Kyoto City, Kyoto Prefecture

Experience the Tatami Room at the Teahouse WACHIGAIYA, the most prestigious Teahouse in Kyoto which began in the 13th century.

14. Tokyo Bringing Goldfish to the World! Goldfish Festival and Auction Tour

Currently, the main production areas in Japan are Yamato Koriyama City, Nara Prefecture, Yatomi Town, Ama-gun, Aichi Prefecture, and Harue-cho, Edogawa-ku, Tokyo. Learn about the different species of goldfish which include Ranchu, Demekin, Wakin, and Ryukin. Some varieties are only breed in certain prefectures, such as 'Tosakin' in Kochi Prefecture and 'Jikin' in Aichi Prefecture. The Edogawa Ryukin has been branded and is highly popular.

The Edogawa Goldfish Festival held every July attracts over 40,000 goldfish enthusiasts from all over Japan and the world. The Tokyo Freshwater Fish Farming Cooperative in Funabori, Edogawa-ku, holds an auction every Thursday from March to September, attended by wholesale dealers.



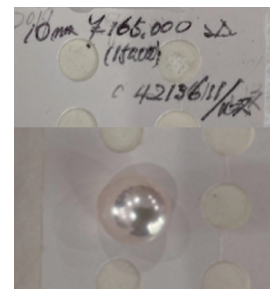
15. Sakaiminato City, Tottori Prefecture Visiting Artisans to Make Shirts from Japanese Hakushu Cotton

Cotton was once a crop grown throughout Japan as a crop alongside rice but has declined due to foreign cotton. In Sakaiminato City, efforts have begun to revive the Hakushu cotton fields that were almost lost and to pass on traditional regional resources for future generations. We are making natural cotton by not using pesticides or chemical fertilizers by considering people and the natural environment we live in. Support this mission and buy a Hakushu Cotton t-shirt.



16. Uwajima City, Ehime Prefecture Seeking Out 10.5mm Large Pearls from Ako-ya Pearls

Iseshima, Nagasaki, and Uwajima are known as Japan's three major pearl-producing areas. However, it is not well known that Uwajima has many super shells. The Koshikai has a long growth period and produces pearls as large as 10mm to 10.5mm, which are rarely seen in the market. It takes about 40 pearls to make a necklace of large pearls. Curating these large pearls with uniform quality takes several years. Visit Uwajima with an appraiser to seek out large Ako-ya pearls.



17. Shodoshima Island, Kagawa Prefecture

Mago Nagasaka Gallery, Kagawa Lacquerware

18. Obuse Town, Nagano Prefecture Sake, Onsens and Architecture

Obuse is the smallest town in Nagano Prefecture. A small Masuichi Ichimura Sake Brewery that has been in this area since 1755. The wooden architecture that has remained unchanged since the Edo period, the wooden bucket that sits in front of the store. Continuing its legacy, it is part of a restaurant and hotel concept, utilizing designers and architects who trained under Frank Lloyd Wright to bring classic charm to this town. You will be guided by 17th generation head of the Ichimura family.



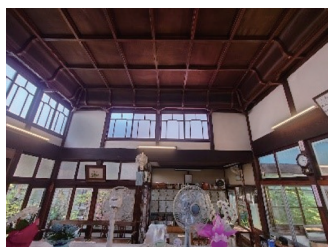
19. Mikawashima, Tokyo Bathing Culture Event at a Gable-roofed Public Bathhouse

Teikoku-yu, a long-established public bathhouse in the Arakawa Ward, Nippori-Mikawashima area, is a public bathhouse with a gable roof that is a masterpiece of architecture. The building has a garden from the changing room to the bathhouse, where azaleas bloom in early summer, allowing you to enjoy nature in the city.



You can also cool off on the veranda of the changing room after bathing. Founded in September 1916, it has a history of over 100 years. The current building was built in 1953, and you can experience the public bath culture.

Shinobu Machida, a member of the Department of Popular Culture Studies who named “Daikokuyu” in Kita-Senju as the King of Public Baths, photographer Kotaro Imada, who runs “Tokyo Public Bathhouse,” and Senyu painter Morio Nakajima will host a special program called “Teikoku-yu Senkondankai,” a Japanese bathing culture event in a conversational style with guests. After the seminar, participants can experience the public bathhouse if they wish.



20. Tsuruoka City, Yamagata Prefecture If You’re Looking for Imari pottery, Tsuruoka is a destination worth visiting!

The Kitamae ships that once plied the Sea of Japan carried Imari pottery from Kyushu to various parts of the country. The old Imari pottery, which was unloaded in the rice-producing area of Shonai, worked in people’s lives and enriched the storehouses of old houses, with many are still left today.

Shop at reasonably priced Edo old Imari pottery at antique shops in Tsuruoka with cultural historian Shinzo Ogi. At the coffee shop MILK run by the owner who is fascinated by old Imari pottery, while you can enjoy a conversation about old Imari pottery while looking at his collection, eating local dishes served on old Imari pottery tableware. Accommodation is at Suiden Terrace, a hotel floating in the rice fields.



21. Tokyo

Tokyo Journey

Tokyo is a city full of hidden charms, a metropolis landscape that has everything from shopping at world-class jewelers, antique dealers, to dining at Japanese kaiseki restaurants, global eateries and the arts of Noh, Kabuki, and Takarazuka.

Experience a variety of cultures eras that have been cultivated in Japan from ancient times to the present, and connect them to the future of art, crafts, and the craftsmen who support them.



Book a Private Art Guide in Tokyo

Experience Tokyo's art scene led by an art specialist.

Brimming with different art events, immersive galleries and some of the world's best museums, Tokyo has a vast variety of artistic offerings.

The guide will customize the schedule to your aesthetic tastes and interests, be that solo debuts by emerging artists, or the latest exhibitions by established contemporary mainstays.

The art can be purchased at your request.

- Sample Schedule

Harajuku and Tennozu Isle

Begin your day with a visit to one of Harajuku's most exciting contemporary galleries: Nanzuka Underground. Now in its own dedicated flagship building, Nanzuka Underground utilizes its expansive space in the backstreets of Urahara to showcase previously overlooked post-20th-century Japanese artists, such as pop-artist Keiichi Tanaami and painter Harumi Yamaguchi.

Located along the canal, Tomio Koyama Gallery in Terrada Art Complex is a venue known for being the first point of call for the introduction of new Japanese artists. This space provides a foundation for Japanese contemporary art, and represents a variety of different practitioners, from ceramicists and sculptors to photographers alike.



While in Tennozu, also check out the myriad artists and artworks displayed at the Terrada Art Complex, the largest-scale gallery complex in Japan. From the concrete sanctum of Anomaly, a three-in-one exhibition space, to the dynamic exhibition space, Scai Park, the distinct atmosphere of these diverse spaces provides an immersive, varied experience for visitors.



Interior Design Journey

Learn about traditional Japanese architectural interior decoration techniques

The quaint Japanese house stands in a rare location was designed by Yukio Hashimoto, a leading interior designer in Japan who has worked on significant structures such as The Peninsula Tokyo. The specialists gathered under Hashimoto, possess traditional interior decoration techniques, are the leading craftsmen in Japan who have worked on facilities such as the Kyoto State Guesthouse and Kinkaku-ji Temple tea rooms.

After visiting the unique space and seeing artists such as Kusumi Naoki, specialists in lattice work, Japanese paper, lacquer, and gold leaf, you will enjoy lunch prepared by a Michelin chef.

Journey into Sumo

Sumo is Japan's national sport, which has been around for over 1500 years. We offer a private tour where you can see the training scenes and training grounds of active sumo wrestlers. You can enjoy watching the powerful training scenes that you normally cannot experience other than those connected to the Sumo stables. A guide who is familiar with sumo will accompany you, and you can learn about the history of sumo.



22. Yamanashi Prefecture Enchanting Diamond Viewing Tour

Koshu Jewelry- a Major Production Area for Japanese Jewelry.

The northern part of Kofu was once a major producer of quartz crystals. The polished and precious metal processing technology developed here nurtured the jewelry industry, and now, about 20% of Japan's jewelry is produced in Yamanashi Prefecture, centered around Kofu. The fact that Kofu is a town of jewelry is not well known except among industry insiders of manufacturers and wholesalers, where glamorous major brands take the forefront.

Visit the Koshu jewelry stores that have been attracting attention since being introduced at the Tokyo Girls Collection in 2022.



23. Tokyo Discover Bonsai at Ginza Uchiku-an, with Bonsai Master Kimura.

24. Okinawa Prefecture Fashion Kimono with Roots

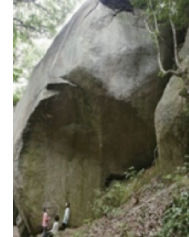
The textile industry, which has been produced in a region since ancient times, based on the climate, local customs, plants, dyes, and know how, is truly a representative of Japanese culture. With Sheila Cliff, a Japanese clothing expert, visit the workshops of Amami Oshima, Oshima Tsumugi kimono-style. Experience mud dyeing, natural dyeing, at the workshop-operated Thidamoon Resort Hotel, and immerse yourself in the world of Oshima Tsumugi.



You can choose an item from Amami, and we will make it according to your wishes, such as a kimono, a custom suit, a sofa cover, or a tapestry. We also offer dressing experience and photography. At night, you can go on a wildlife observation tour to see natural monuments such as the crowned cranes and frogs.

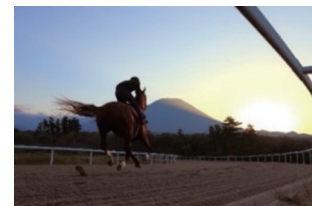
25. Okayama Prefecture Visiting the Stone Island that Built Japan, Crossing the Sea, the Bisan Islands

The granite and stone cutting technology of the Bisan Islands, which is spread between Okayama Prefecture and Kagawa Prefecture, has supported Japan's architectural culture for a long time. Japan's modern Western-style architecture, such as the Bank of Japan head office, the Meiji Life Building, Nihonbashi, and Tokyo Station Marunouchi Station, was built using granite from the Bisan Islands and the stone walls of modern castles, like the stone walls of Osaka Castle. These islands natural resources have cultivated a rare culture of people who cut, transport, and live with stones. Experience the changes of these islands over 400 years and see the modern beauty and transformation.



26. Hokkaido Prefecture, Osaka Prefecture, Aichi Prefecture, Tottori Prefecture, Okayama Prefecture Japan Horse Gear Tour

Japan has attracted hot attention from Europe, America, and the Middle East for horse breeding and horse gear making, with Japan's horses winning the Dubai World Cup in recent years. A tour to visit Japan's horse breeding and horse gear craftsmen. Visit the workshop of the saddle craftsman of Som saddle, which boasts a 70% share of the world market in Hokkaido Prefecture, and the Jockey Boots Arakawa Yuichi Shoe Shop in Osaka Prefecture, where jockey boots worn by the world's top jockeys William Buick are made, the armor used by the world's top jockeys William Buick is made by SS Manufacturing in Aichi Prefecture, and the ONZO Jeans by Tanaka Hiroyuk in Okayama Prefecture, which is used as a training jeans for racehorses, which has no seams on the inside, and finally Mt. Daisen Hills in Tottori Prefecture, where racehorse breeding that is recognized worldwide is aimed at the foot of the magnificent Mt. Daisen. This tour you will travel from each destination using a private jet.



27. Tokyo Wearing Hemp - a Material Used by Japanese People Since Ancient Times

Hemp, which has been an indispensable part of Japanese life since ancient times. Its history is ancient, and hemp ropes have been excavated from the ruins of Jomon period (14,000 and 300 BC) creation stories dating back about 10,000 years. Hemp has been used in various clothing and daily



items by Japanese people as a comfortable material that suits the rich climate and environment of Japan.

Majotae,' a brand that revives the original texture of hemp, a fabric brand developed by Avex Entertainment that realizes a texture that combines the softness of silk and the softness of cotton, overturning the image of hemp that is generally distributed as having a hard and rough touch.

28. Kawahara-machi, Tottori City

Visit the Ushinoto-yaki Kiln, representing Tottori's Folk Art

The beginning of the Ushinoto-yaki kiln, where about 60 craftsmen from the Iwami-yaki producing area moved to Ushinoto to seek Ushinoto's soil at the end of the Edo period. The white soil deposited by the flow of the Hikida River is well-fired and is still being excavated from the rice fields, without a fear of it ever running out. When the demand for Ushinoto-yaki



decreased due to the spread of industrial products in the Showa period (1945–1989), Yasuda, the 4th generation master potter of the Ushinoto-yaki kiln, instructed Kobayashi, to produce it in the form of 'New Folk Art.' The interaction with Kobayashi of Ushinoto-yaki, Yamamoto of Iwai kiln, Yamashita of Enkyoji kiln, and Sakamoto of Inshu-Nakai kiln, who will lead the future of Tottori's folk art.

FOOD EXPERIENCES

29. Shinagawa, Tokyo

Visit a Chocolate Patisserie

Visit Junji Tokunaga owner and pâtissier of Equilibre, and Moe Takahashi the Japanese representative team member who won the Coupe du Monde de la Patisserie 2023, and enjoy the world's best sweets.

30. Tokyo

Visit the "Ohira Farm," a Land of Organic Farming

The Ohira family has been in farming in Setagaya for over 400 years. The 11th generation farmer, Miwako Ohira, is committed to maintaining the rural life and sustaining the community. Through the Ohira family, you will experience and understand how this farming family works at stopping the disappearing scenery and agricultural lifestyle.

31. Kagawa Prefecture

Soy Sauce Made with Wooden Barrels

Founded in 1735, the Okada family's 18th generation maker works in their soy sauce store that has been in business for over 260 years. Around 1965, as the soy sauce making became mechanized one after another, these warehouses and soy sauce rooms were protected, which now is the only remaining warehouse that continues the traditional brewing method called the Koji method. See the process of soy sauce production with the unique taste and depth of richness.

32. Furano, Hokkaido Prefecture Visiting Domaine Rezon Winery An Ethical Tour that Considers Living Environments that Contributes to the Region



Merimero Brown, who sings the praises of sustainability, is the 11th generation head of the Domaine Rezon Winery in Nakafurano-cho, Hokkaido. The use of circular environmental methods with the combination of goat's natures, using herbicides are used as little as possible, makes for a refreshing aroma and taste.

33. Okayama Prefecture Visit La Grand Corinne Japon, a Natural Wine Maker Using Japan's Unique Varieties

Mr. Ooka is currently making wine using Muscat of Alexandria and cultivating native mountain grape varieties suitable for Japan's climate and environment. In the beginning of his university days, he was fascinated by Bordeaux wine and went to Bordeaux in 1997 before his graduation ceremony to obtain the national qualification of Advanced Technologist in Brewing and Cultivation (BTS) and became the cultivation manager of E.Guigal, a major wine maker. From 2003, he studied under Thierry Allemand, a pioneer of natural wine in Northern Rhône, France. In his mid-40s, he returned to Japan and settled in Okayama. He selected Okayama, where grape cultivation for wine has not yet been conducted, due to its warm climate, low rainfall, good drainage, and low risk of typhoons during grape harvest. The work Mr. Ooka has produced was featured in the 2013 New York Times World Edition.



34. Chichibu, Saitama Prefecture Visit the Chichibu Distillery

The Chichibu Distillery was founded in 2004 by Akuto. In 2008, whiskey production began. It attracted attention as the first distillery to be established in Japan in 35 years. It is one of the recognized distilleries in the world with numerous awards from the most prestigious British whiskey tasting competition. You can see the manufacturing process (crushing of barley malt, saccharification, fermentation, distillation, storage, and aging), which is usually closed to the public.



You will also visit Arai Norio, the second generation of the Chichibu Meisen, founded in 1970, and see the latest works of Meisen with a Taisho romance scent and Ichiro's Malt. Enjoy French cuisine using local Chichibu indigenous vegetables at the restaurant "Atelier de Comma" by French master chef Toshihiro Komine.

35. Akkeshi Town, Hokkaido Prefecture Visit the Akkeshi Whiskey Distillery

Adopting the methods and facilities were introduced from Forsyths, Scotland. Taking advantage of environment of Hokkaido, the Bekanbeushi Wetlands which is rich in peat, the necessary raw material for whiskey, where water passing through the peat layer is used as the brewing water, and a whiskey with a unique terroir and personality that fuses traditional Scottish manufacturing methods with the Akkeshi-like flavor into a cool, moist, and rich taste.



36. Niimi City, Okayama Prefecture Savor the Eiji Miyamoto Tea Brand

A tea plantation spread on the deep east-facing slope of the Chugoku Mountains in Niimi City, Okayama Prefecture. The tea plantation has a tea factory for making tea, and there is also a place where you can spend time slowly strolling in an English garden and a tea specialty store. The tea concept created by Mr. Eiji Miyamoto is a tea with a good aroma, a firm taste, and a clear brilliance, like Darjeeling, which is called the champagne of teas. He started with planting one seedling at a time. After more than 20 years, the tea trees finally grew and gave vitality to the land and to his dream of the EIJI MIYAMOTO brand and to convey the charm of tea everyone.



37. Saga Prefecture Ureshino Tea Tourism

We will guide you through the concept of ‘Ureshino Tea Tours.’ Ureshino Onsen, with a history of 1300 years, Ureshino tea with a history of 500 years, and Ureshino City with Hizen Yoshida ware with a history of 400 years.



Firstly, enjoy the “tea space experience” in the vast tea fields, then visit Ureshino Onsen, where a dedicated tea master serves tea that matches each ingredient for dinner. The stay, the environment and the cuisine are built around how tea makes life calm and memorable.

38. Tokyo Culinary Program on Modern Pottery and Food

This is a program where you can experience the commitment and aesthetic sense of craftsmen called lifestyle crafts who create modern pottery that combines beauty and practicality.

Mr. Masanobu Ando, who lives in Tajimi City, Gifu Prefecture, creates pottery with a neutral and white dish

that ordinary people use and is beautiful in shape. Mr. Takahiro Yamano in Matsue City, Shimane



Prefecture, who is characterized by a bottle that becomes slender and refined as it goes down and a handle made of rattan. Mr. Masao Moriyama in Ota City, Gunma Prefecture, who has a unique knowledge of pottery. Moriyama Kiln potter Inaba, who is famous for his bold patterns from Iga City, Mie Prefecture, and the popular hand-kneaded teapot is one of the popular products of master potter Murakami of Chino City, Nagano Prefecture.

We will introduce unique modern pottery. The “Atelier Ichiro” in Nishi-Azabu, Tokyo, is a gallery that introduces unknown artists. The pottery gallery in Suginami offers dishes prepared by chefs Yoshioka to spotlight the cuisine and pottery.

39. Tokyo Dining Event with Modern Pottery and Cook Watanabe Maki

A special cooking class to enjoy Mr. Watanabe Maki’s dishes with ‘Onta Pottery,’ a simple and rustic atmosphere that colors everyday life. Serve a dish of sautéed chicken thigh meat with asparagus on a large plate of Onta pottery or used to display a cheesecake.

Onta pottery is loved by Michelin-starred restaurants and top chefs, and it is a rustic and warm dish presents food at its best.

WELLNESS EXPERIENCES

40. Tokyo

Introduction of cutting-edge regenerative medicine and anti-aging therapy such as autologous stem cell transplantation and stem cell culture. Stem cell therapy is highly effective but expensive, and is attracting attention as regenerative medicine.

41. Kyoto City, Kyoto Prefecture Learning the World of Meditation at the UNESCO World Heritage Site Kennin-ji Temple

The Kennin-ji Temple in Kyoto, designated as a UNESCO World Cultural Heritage Site, is the oldest Zen temple in Kyoto, located in the Gion district. Within its grounds lies the ‘Summer Temple’, known because of the white flowers that bloom in early summer.

A special program hosted by the Vice Abbot Toryo Ito, who has been promoting the world of Zen to the world through activities such as Zen seminars and guidance experiences. Abbot Ito



has shared his wisdom at Meta’s headquarters in the United States, in France, Germany, and Denmark. He has also authored many books. It is a rare opportunity to have his private experience, he will explain in an easy-to-understand manner, and you will be

guided through the experience of meditation that can be easily be incorporated into your daily life. You will also be able to stroll around the gardens and enjoy a breakfast of Kyoto kaiseki in the tea room.

42. Okinawa Prefecture

Reset your body at hotel 'The Scene' which is overlooking the sea in Amami Oshima. This program is 2 nights and 3 days of good sleep plan, yoga on the wooden deck over a tranquil garden, self-facing the sea to release electromagnetic waves, a head massage and relax the scalp, natural hot springs, ending the day by sleep under the moonlight and wake up with the rising sun in the horizon. A Japanese way to refresh and recenter.

43. Okinawa Prefecture Lifestyle resort of fermented life

Enjoy this unique hotel life which uses 'Effective Microorganism Technology' within the concept room 'Iko' the 'Whole Earth Room' where the space uses earth blended with charcoal fused on the entire walls, effective for humidity control and air purification. The 'Whole Earth Room' has been specially processed to release excess electricity with solid flooring. We also prepare a menu option considering nutrients to support sleep.

OUTDOOR EXPERIENCES

44. Okayama Prefecture, Kagawa Prefecture Seto Inland Sea Art Cruise on a Catamaran Yacht & a Moment Immersed in Art.

Embark on a catamaran yacht with a private chef and cruise slowly from Shin-Okayama Port to Inujima Island, Teshima Island, Naoshima Island, Seto Ohashi Bridge, and Uwajima Port, enjoying the beauty of the Seto Inland Sea. Visit art museums familiar in the world acclaimed Setouchi Triennale Art Festival, such as the Seirenscho Museum (Inujima), the Chichu Art Museum (Naoshima), and the Teshima Art Museum (Teshima), with a private guide.



45. Hokkaido Prefecture Canoeing Tour Down the Headwaters of the Kushiro River



Canoe guide Yuuya Tsuchida will accompany you on the Kushiro River. Relax in nature as you let the flow of Kushiro River take you into nature and a slower pace of traveling. After the canoe tour, enjoy a late lunch at Auberge SORA on the shores of Lake Kushiro, where you can enjoy French cuisine using the seasonal flavors of Hokkaido.

46. Ehime Prefecture Nametoko Valley Canyoning

The Nametoko Valley in southwestern Shikoku is one of Japan's leading canyoning spots. At Yukiwa Falls, one of Japan's Top 100 Waterfalls, you can enjoy a natural ride winding and flowing down narrow spaces and adjusting elevations, slow moments in nature to capture.

SPORTS EXPERIENCES

47. Mie Prefecture Experience 260 km/h in a Super Formula Car

The Suzuka Circuit, built by clearing the mountains, has many technical courses with continuous corners and slopes, so it is loved by F1 drivers who like Suzuka. See world class drivers' race, Masashi Yamamoto, who was with Honda F1, and Matsuda Tsugio from Kuwana City.

48. Tooshiya, Kyoto

The Sanjusangendo Tooshiya Big Target Tournament held on a Sunday near January 15th every year, is an event based on the large number of arrows shot by each clan's archers under the eaves of the main hall during the Edo period. In Tooshiya, a shooting range is set up on the west side of the main hall, which is about 120 meters long, where world competitors archers shoot at a large target about 60 meters away to compete and demonstrate their skills.



49. Kagoshima Prefecture Satsuma Hioki-ryu Koshiya Kumiyumi, Battlefield Archery Demonstration Tour

Satsuma Hioki-ryu Koshiya Kumiyumi, designated as an intangible cultural property of Izumi City, is the only place in Japan that practices the shooting method as done in actual combat, as a martial art. You will see a powerful demonstration based on actual combat on the battlefield, the swift combat moves and actions that give an exciting perspective to an art form within an historical context.

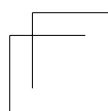
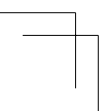
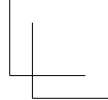
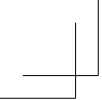


The Third World Kyudo Taikai (Tokyo) 2018 Demonstration

50. Sendai Prefecture, Miyagi Prefecture Aikido Experience Tour - Become an Apprentice in Aikido at Kobayashi Dojo

Experience the training of Aikido by professional athlete and instructor Ryuji Shirakawa. He has trained and competed internationally representing Japan. He is highly regarded overseas for his splendid skills, and he is invited for instruction from more than 10 countries every year and spends a quarter of the year teaching overseas.





We plan and sell experience content for luxury.
We propose plans that meet the needs of our customers,
spanning three to six months.
We hope that you will enjoy Japanese culture and nature
through interactions with local residents.



CONTACT US



Regional Revitalization and Inbound Tourism Council

Office : 2-7-8, Kyobashi, Chuo-ku, Tokyo, Japan

E-mail : info@inbound-council.com

The products listed here are arranged by travel agencies that are members of the Regional Revitalization and Inbound Tourism Council.